



23-May-2008, *Pachynematus* sp. or *Dolerus* sp., lots of individuals on grasses (or sedges). Failed to raise.



3-Aug-2008, maybe *Atomacera debilis* only one found feeding on *Desmodium* (evidence of many). **Still feeding.**



28-May-2009, leaf blotch miners on *Crataegus* sp, hawthorn, All Died



2-June-2009, **SUCCESS!** *Monostegia abdominalis* eating *Lysimachia ciliata*.



30-Jul-2008, many, *Phymatocera* sp., defoliating *Smilacina racemosa*, false Solomon's seal. Failed to raise 2006, 2007 and searched too late in 2008.

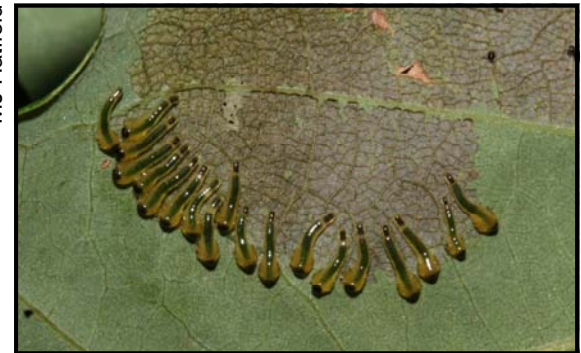


30-Aug-2008, *Eriocampa juglandis*, feeding on *Juglans nigra*, walnut. Failed to raise in 2008, found some last week, **still feeding.**



31-May-2009, Perhaps *Monophadnoides (Blennocampa) rubi*. Collected on raspberry. Later instar smooth. But it died.

MJ Hatfield



11-Sep-2008, feeding on *Quercus macrocarpa*, bur oak, Failed in 2008 but 2009 **SUCCESS** last week. Could be 1 of 4 species.



17-Jul-2008, **still feeding** on *Eupatorium rugosum*, white snakeroot



29-May-2009, found feeding on *Carya ovata*, shagbark hickory, but all died (drowned)

**Some
Iowa sawflies**
Many thanks to Dr. David Smith,
research entomologist,
who helped ID